



**BYTE-CODE**  
Technology Solutions

SIMPLE SOLUTION = HIGH VALUE

OPEN SOURCE - ENTERPRISE - UPSTREAM - BE VISIBLE - INNOVATION

# Past, Present and Future of Symbolic Platform

**...a long time ago...**  
**...in a data center far far away...**

# Current Environment

~10 Intel-based servers:

RedHat Enterprise Linux

~6: Apache web servers

~2: MySQL servers (cluster-free)

~2: j2ee/jee Application Servers

Network Load Balancer

only to web servers

# Internal refactoring

Move from RHEL to Centos

Introducing internal Cloud:

- Cluster Suite (optional)

- Xen virtual machines

Make a “second path” on load balancing

- Timing tuning on NLB

- 1 or 2 machines (virtual?) if principals do not work

# Configuration Management

PROBLEM **SCALING YOUR INFRASTRUCTURE?** WITH **PUPPET** DO IT WAS NEVER SO EASY

BYTE-CODE PRESENTS:



# Configuration Management

Make configurations reproducible

Define 1, provision 1000

Traceability (who, when, what)

Commit, RollBack

Easy provisioning

# Symbolic (Web Console)



DIFFICULT MANAGING  
YOUR INFRASTRUCTURE?  
TRY **SYMBOLIC** THE NEXT GENERATION  
DATACENTER MANAGEMENT PLATFORM.

BYTE-CODE PRESENTS:



DATACENTER MANAGEMENT PLATFORM

# Symbolic

Agile Datacenter Management Platform

Central Web Interfaces

Virtual Machines Management

OpenSource Standards

Func

Puppet

Cobbler

# External Extensions

Amazon EC2 (cpu + storage)

Auto-Scaling features

- Needs limits definition

- Needs “costs prediction”

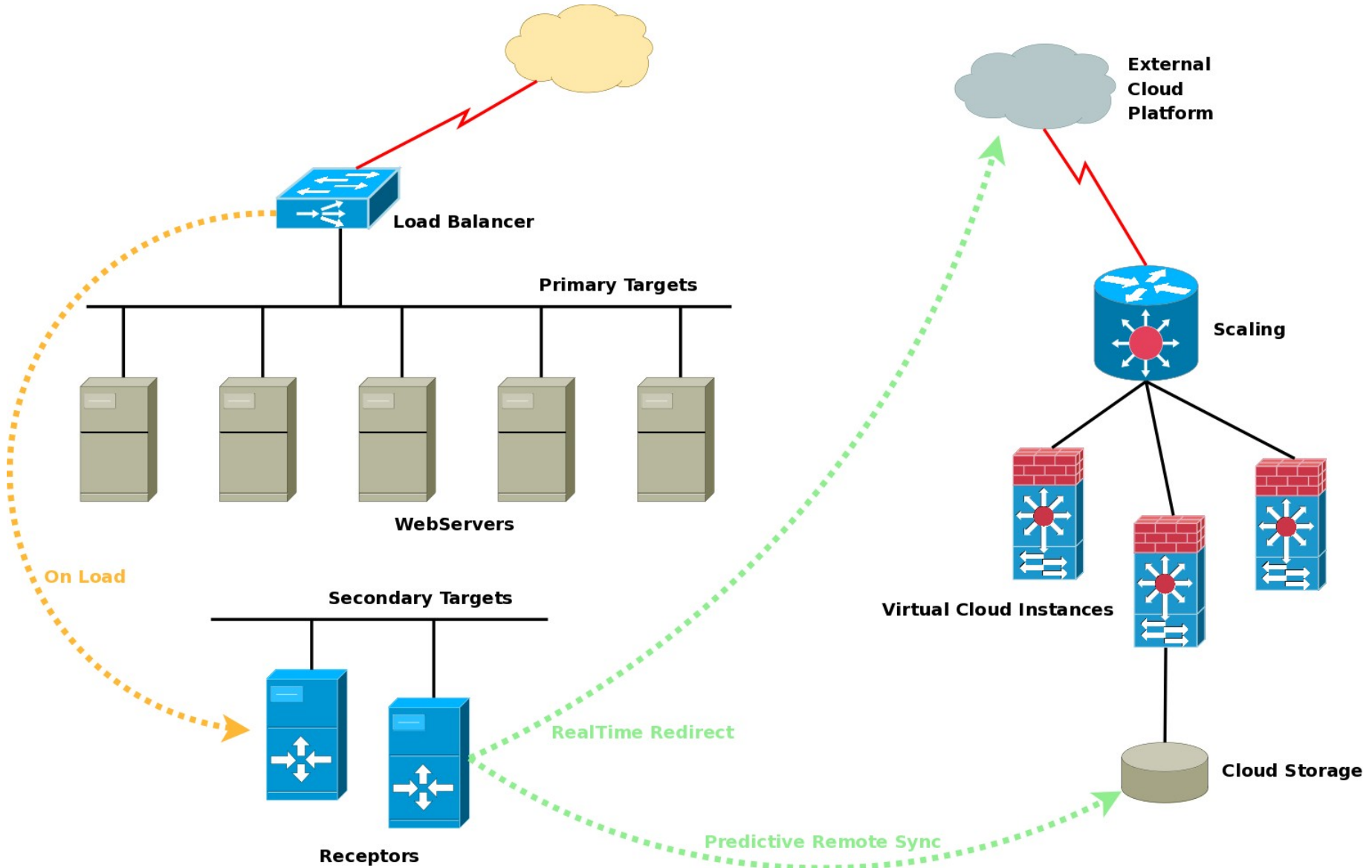
Requirements:

- 100% Static “Home Page”

  - Generated from CMS

  - Self-generate from cloud computing internal engine

# Receptors



# Topics

## Predictable remote sync

Only few seconds/minutes before you need  
Each XX minutes for a defined time-frame

## Reduce/Expand cloud infrastructure

Manually, with a web interface  
Automatically if you don't need it

## Reports

Internal infrastructure usage  
External cloud usage/dimension

# HowTo...

Analysis (3 days onsite)

Internal refactoring

- Introducing configuration management

- Introducing central management console

- Introducing virtualization

- Configure “receptors”

- Configure “sync paths”

External environment

- Auto-scale Amazon environment

- Define limits (euro) per year/month